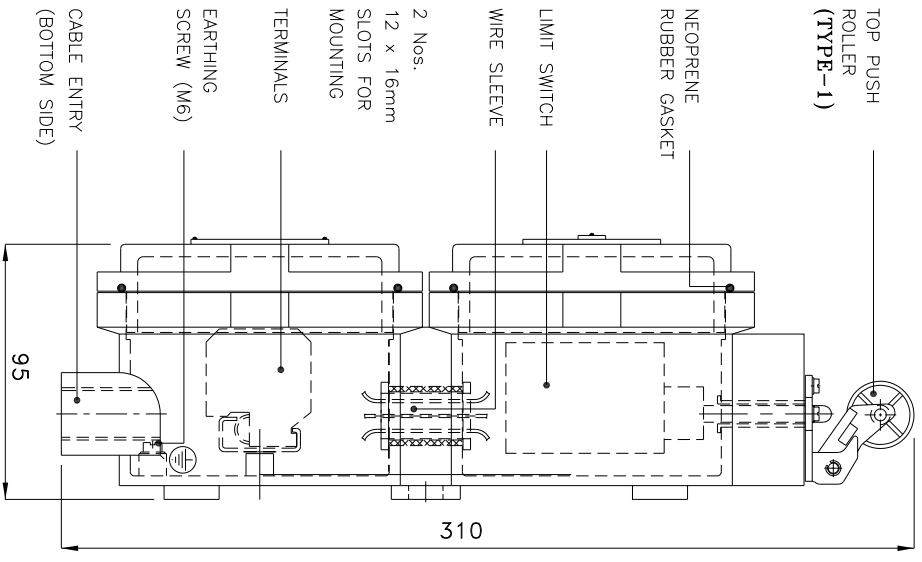


**FRONT VIEW**



**SIDE VIEW**

TOP PUSH ROLLER (TYPE-1)

NEOPRENE RUBBER GASKET

LIMIT SWITCH WIRE SLEEVE

2 Nos. 12 x 16mm SLOTS FOR MOUNTING

TERMINALS EARTHING SCREW (M6)

CABLE ENTRY (BOTTOM SIDE)

- Reference IS/IEC Standard as follows :
- 1 - FLAMEPROOF (Ex d) PROTECTION - IIA/IB, IS/IEC 60079-1 (2014)
  - TEMPERATURE CLASS - T6
  - 2 - INGRESS (IP) PROTECTION - IP-66, IS/IEC 60529 (2001). (Reaffirmed 2014)

- Standard Specification :
- 1 - MATERIAL - CAST ALUMINIUM ALLOY
  - 2 - FINISH - INSIDE & OUTSIDE LIGHT GREY EPOXY POWDER COATING SHADE No. 631 AS PER IS-5
  - 3 - EARTHING - 1 No. INSIDE & 2 Nos. OUTSIDE M6 SIZE S.S./BRASS SCREWS WITH 2 Nos. PLAIN WASHER
  - 4 - HARDWARE - STAINLESS STEEL
  - 5 - GASKET - 'O' RING NEOPRENE RUBBER GASKET
  - 6 - MOUNTING ARRGT. - AS SHOWN IN DRG.

Material / Components Specification :

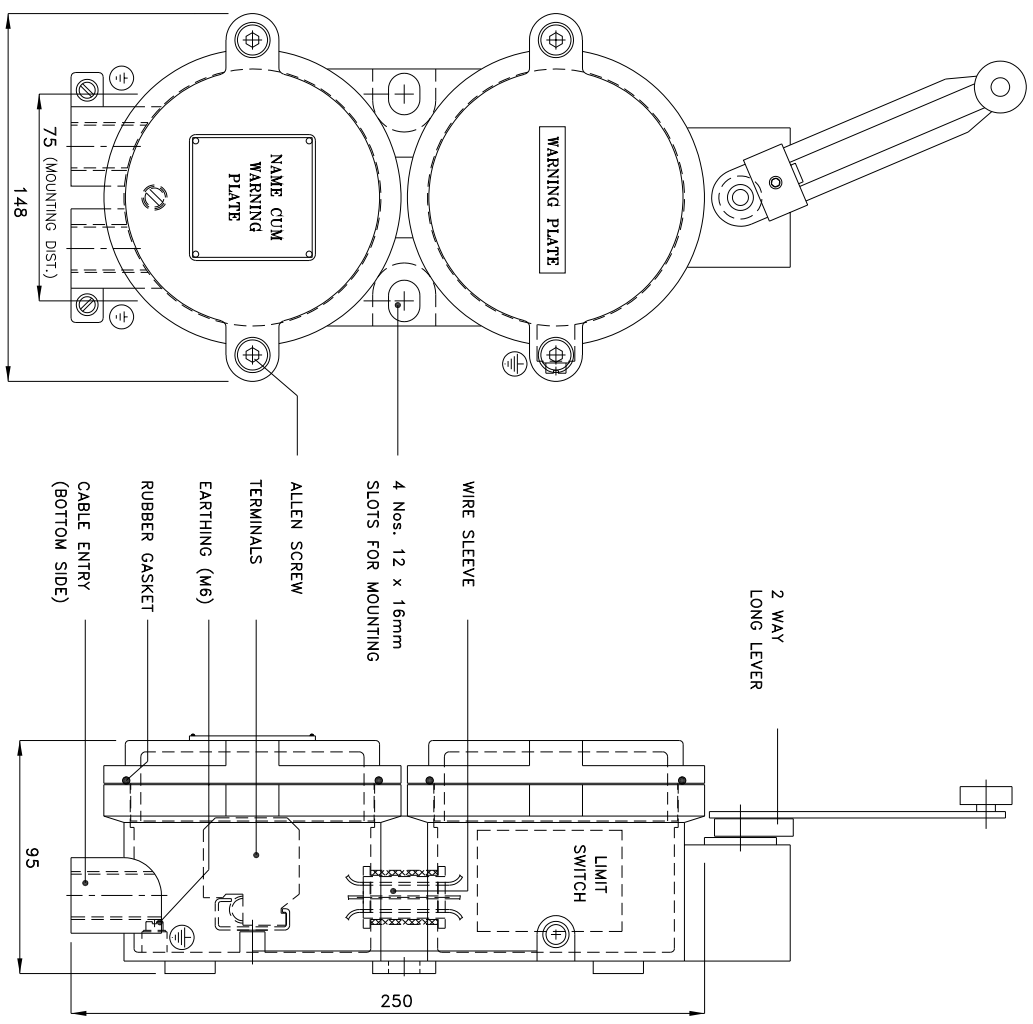
- 1 - S.S. NAME CUM WARNING PLATE (WITH DESCRIPTION TITLE, CIMFR, PESO, SR. NO., GAS GROUP, RATING, BIS MARKING, WARNING STATUS, etc...)

- 2 - LIMIT SWITCH - 1 No. 10 Amp., 415V AC 1NO + 1NC LIMIT SWITCH ELEMENT SNAP ACTION TYPE OF 'AVON/SIEMENS' MAKE.
- 3 - TERMINALS - 4 Nos. 2.5sq. mm CLIP-ON TYPE TERMINALS OF 'ELMEX/CONNECTWELL' MAKE
- 4 - CABLE ENTRIES - 2 Nos. M20 / 1/2" NPT / 3/4" ET EQUIVALENT CABLE ENTRIES FROM BOTTOM SIDE - REFER DRAWING
- 5 - CABLE GLAND - (Ex d) DOUBLE COMPRESSION TYPE CABLE GLAND OF 'SUDHIR' MAKE
- 6 - STOPPING PLUG - (Ex d) STOPPING PLUG OF 'SUDHIR' MAKE

- Fitting OPTIONS :
- 1) MATERIAL CONSTRUCTION : STAINLESS STEEL
  - 2) VOLTAGE : 110V / 230V / 415V AC
  - 3) CABLE GLAND & PLUG : BRASS/S.S./ALUMINIUM
  - 4) PAINT SHADE : 632/356/7031/7032, etc... (As per Standard)
  - 5) AMP. RATING : UP TO 10 Amp. (MAX.)

**NOTE :**  
 COMPONENT LAYOUT IS TENTATIVE RELOCATION OF PARTS & COMPONENTS IS POSSIBLE AT THE TIME OF ACTUAL MANUFACTURING.  
 OVERALL DIMENSIONS ARE ±10mm

REV.	DATE	DESCRIPTION	DRN.	CHD.	APPD.	SCALE	CAT. No. <b>LS/1010</b>	MODEL No. <b>LS/1010-8</b>	DRN. profile	CHKD. JASJAY	CIMFR CERT. No. <b>IN/CIMFR/TR21/R/H124</b>	PESO No. : <b>P537976/1</b>	BIS LICENCE No. : <b>CM/L-000331365</b>
											Dt. 08/07/2021	Dt. 02/06/2022	



**FRONT VIEW**

**SIDE VIEW**

**Fitting OPTIONS :**

- 1) MATERIAL CONSTRUCTION : STAINLESS STEEL
- 2) VOLTAGE : 110V / 230V / 415V AC
- 3) CABLE GLAND & PLUG : BRASS/S.S./ALUMINIUM
- 4) PAINT SHADE : 632/355/7031/7032, etc... (As per Standard)
- 5) AMP. RATING : UP TO 10 Amp. (MAX.)

**Reference IS/IEC Standard as follows :**

- 1 - FLAMEPROOF (Ex d) PROTECTION - IIA/IB, IS/IEC 60079-1 (2014)
- TEMPERATURE CLASS - T6
- 2 - INGRESS (IP) PROTECTION - IP-66, IS/IEC 60529 (2001). (Reaffirmed 2014)

**Standard Specification :**

- 1 - MATERIAL - CAST ALUMINIUM ALLOY
- 2 - FINISH - INSIDE & OUTSIDE LIGHT GREY EPOXY POWDER COATING SHADE No. 631 AS PER IS-5
- 3 - EARTHING - 1 No. INSIDE & 2 Nos. OUTSIDE M6 SIZE S.S./BRASS SCREWS WITH 2 Nos. PLAIN WASHER
- 4 - HARDWARE - STAINLESS STEEL
- 5 - GASKET - 'O' RING NEOPRENE RUBBER GASKET
- 6 - MOUNTING ARRGT. - AS SHOWN IN DRG.

**Material / Components Specification :**

- 1 - S.S. NAME CUM WARNING PLATE (WITH DESCRIPTION TITLE, CIMFR, PESO, SR. NO., GAS GROUP, RATING, BIS MARKING, WARNING STATUS, etc...)
- 2 - LIMIT SWITCH - 1 No. 10 Amp., 415V AC 1NO + 1NC LIMIT SWITCH ELEMENT SNAP ACTION TYPE OF 'AVON/SIEMENS' MAKE.
- 3 - TERMINALS - 4 Nos. 2.5sq. mm CLIP-ON TYPE TERMINALS OF 'ELMEX/CONNECTWELL' MAKE
- 4 - CABLE ENTRIES - 2 Nos. M20 / 1/2" NPT / 3/4" ET EQUIVALENT CABLE ENTRIES FROM BOTTOM SIDE - REFER DRAWING
- 5 - CABLE GLAND - (Ex d) DOUBLE COMPRESSION TYPE CABLE GLAND OF 'SUDHIR' MAKE
- 6 - STOPPING PLUG - (Ex d) STOPPING PLUG OF 'SUDHIR' MAKE

**Page No. : 111**

THIS DRAWING IS PROPERTY OF "SUDHIR SWITCHGEARS PVT. LTD." AND MUST BE RETURNED ON REQUEST IF IT IS SUBMITTED AS CONFIDENTIAL INFORMATION IN CONNECTION WITH ENQUIRY, TENDER, ORDER, OR CONTRACTS IT IS NOT TO BE USED FOR ANY OTHER PURPOSE OR ORDER NOR MAY IT RE-COPIED OR LENT WITHOUT OUR AUTHORITY IN WRITING.

**NOTE :**  
 COMPONENT LAYOUT IS TENTATIVE RELOCATION OF PARTS & COMPONENTS IS POSSIBLE AT THE TIME OF ACTUAL MANUFACTURING.  
 OVERALL DIMENSIONS ARE ±10mm

<p><b>NOTE :</b>                  COMPONENT LAYOUT IS TENTATIVE RELOCATION OF PARTS &amp; COMPONENTS IS POSSIBLE AT THE TIME OF ACTUAL MANUFACTURING.                  OVERALL DIMENSIONS ARE ±10mm</p>		<p>CAT. No.  <b>LS/1010</b></p>
<p>MODEL No.:  <b>LS/1010-9</b></p>		<p>DRN. profile</p>
<p>CHKD. JMSHW</p>		<p>APPD. .</p>
<p>SHEET 1 OF 1</p>		<p>SCALE</p>
<p>REV. DATE DESCRIPTION DRN. CHNO. APPD.</p>	<p>N. T. S. REV.-0</p>	<p>CIMFR, PESO, SR. NO., GAS GROUP, RATING, BIS MARKING, WARNING STATUS, etc...)</p>
<p>DR. 08/07/2021</p>		<p>DR. 02/06/2022</p>
<p>IN/CIMFR/TR21/R/H124</p>		<p>CM/L-000331365</p>

**SUDHIR SWITCHGEARS PVT. LTD.**  
 130, Malabar Sankarapuram, Malabar - 400 023

**TITLE :** FLAMEPROOF-WEATHERPROOF ENCLOSURE FOR LIMIT SWITCH (2 WAY LONG LEVER)

CHKD. CERT. No. :  
 Dt. 08/07/2021

PESO No. :  
 Dt. 02/06/2022

BIS LICENCE No. :  
 CM/L-000331365